

You Can Make a Difference

Episcopal Community Services helps individuals and families with multiple needs overcome the impact of poverty. ECS relies on the generosity of individual, parish, foundation and corporate donors for a substantial portion of its annual operating budget of over \$18 million. As government funding continues to decline, Annual Fund giving has become even more crucial in helping bridge the gap.

Each gift to the Annual Fund is directed to where it is needed the most, immediately helping those struggling under the burden of poverty in San Diego and the Coachella Valley.

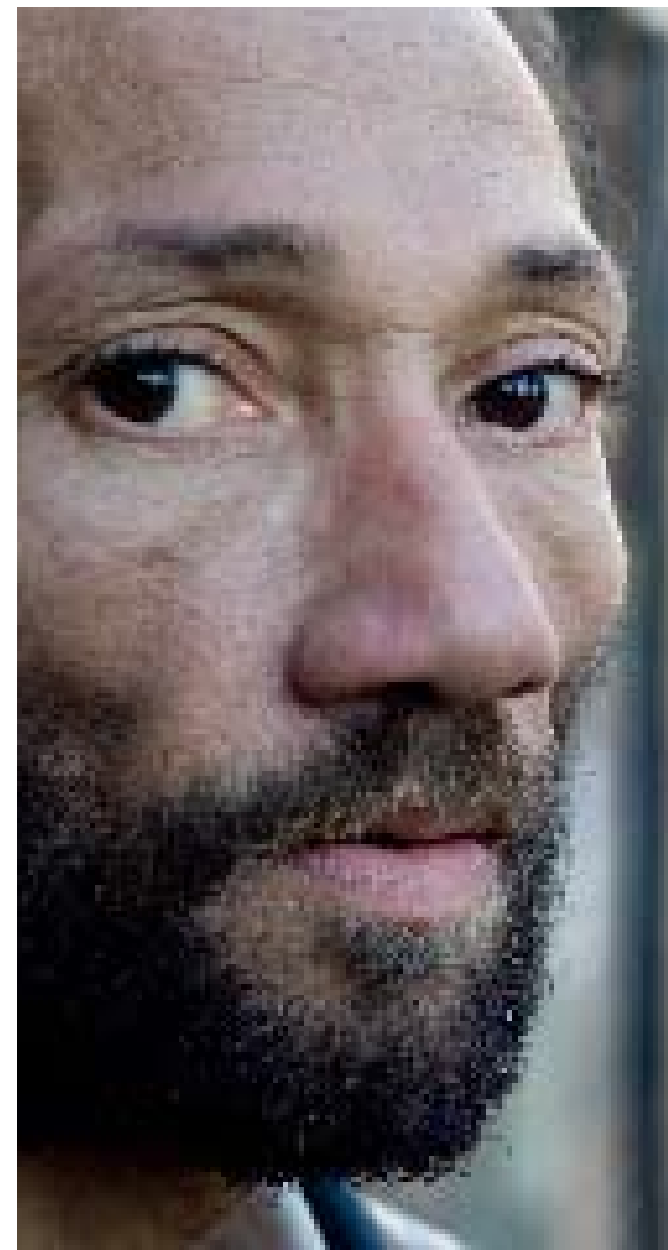
Donations enable us to provide basic necessities such as shelter, food and personal care items. In addition, ECS offers counseling services, job referrals, and self-sufficiency coaching to ensure each client we serve is provided with the care and services they need to live a life of dignity.

To make a meaningful donation today, please call the Development Office at (619) 228-2800 or e-mail development@ecscalifornia.org.

**For over eighty years,
Episcopal Community Services
has provided comprehensive help
to thousands of children and adults,
inspiring them to lead
independent and successful lives.**

**Each of our vital programs and services
offered each day
are guided by the ECS mission
of “serving God by serving those in need.”**

Mailing Address:
4305 University Avenue, Suite 400
San Diego, CA 92105
(619) 228-2800
www.ecscalifornia.org



SAFE HAVENS





The Safe Havens are transitional housing residences serving mentally ill, chronically homeless single adults in the metro San Diego area. In addition to providing a safe home, the program also offers intensive case management for 18- 24 months, during which time the residents are assisted with securing a stable income, obtaining permanent housing and gaining valuable life skills. Emphasis is placed on supportive, communal living in an alcohol and drug-free environment.

While residing at the Safe Havens residents also benefit from employment counseling, educational guidance, disability income enrollment assistance, developing and sustaining a plan to manage mental health issues, Psycho-educational groups and voluntary chaplaincy services. In addition, residents enjoy three meals per day, every day of the year prepared by *ECS' Food Services*.

Uptown Safe Haven is located in the Banker's Hill neighborhood in San Diego. Uptown Safe Haven accommodates up to 19 single adults. *Downtown Safe Haven* is located near San Diego City College and accommodates up to 28 single adults.



Potential residents are referred to the Safe Havens through ECS' Friend to Friend program, through our partnership with the Community Research Foundation, and from other local agencies. The Safe Havens serve as ideal residences for individuals who may otherwise have difficulty obtaining transitional supportive housing in the area.

The Safe Havens are funded in part by the Department of Housing and Urban Development (HUD), the San Diego Housing Trust Fund and the County of San Diego.

For more information, please contact the Program Offices.

Uptown Safe Haven
2822 - 5th Avenue
San Diego, CA 92103
(619) 294-7013

Downtown Safe Haven
1425 C-Street
San Diego, CA 92101
(619) 238-8300