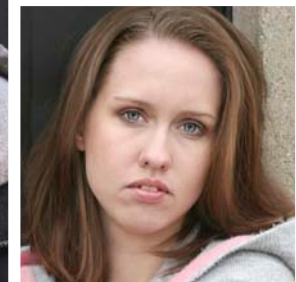
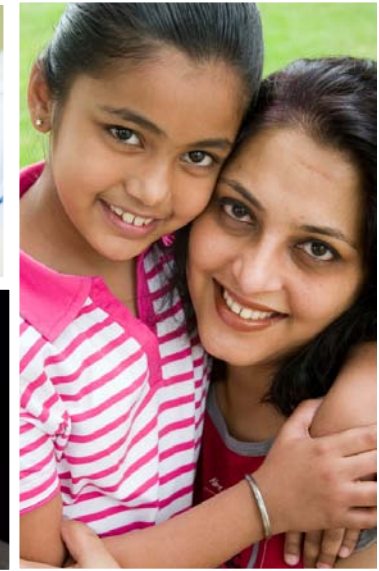




**For over eighty years,
Episcopal Community Services
has provided comprehensive help
to thousands of children and adults,
inspiring them to lead
independent and successful lives.**

**Each of our vital programs and
services offered each day
are guided by the ECS mission of
“serving God by serving those in need.”**



SERVING GOD BY SERVING THOSE IN NEED

Mailing Address:
PO Box 33168
San Diego, CA 92163
(619) 228-2800
www.ecscalifornia.org



HOUSING & SUPPORTIVE SERVICES SAN DIEGO COUNTY

Julian's Program for Women & Children

Serves women and children who are rebuilding their lives after fleeing domestic violence. Services include housing for up to 18 months plus counseling and case management to help in connecting to resources that will enhance their ability to establish new households free from violence.

Downtown & Uptown Safe Havens

Serve chronically homeless adults with serious mental illness by providing transitional housing for up to 18 months. Services facilitate transition into stable, permanent housing by supporting residents seeking a source of income.

Friend to Friend Program

Serves the needs of mentally ill, chronically homeless adults. Clients of Friend to Friend may be eligible to receive services in the areas of income, housing, and mental health with the goal of regaining independence.

Emergency Assistance

Offers immediate resources to individuals and families who are homeless or near homeless by providing clothing, food, infant formula, diapers and hygiene kits to offset the cost of these essential items in an emergency or crisis situation. Referrals to other available community social services are also provided.

CHILD & FAMILY SERVICES

Head Start & Early Head Start

Serves children 0 to 5 and their families as well as pregnant women. Provides comprehensive child development programs designed to help break the cycle of poverty by addressing educational, emotional, social, health, nutritional and psychological needs.

Para Las Familias

Serves children 0 to 5 from low income and high risk populations with early intervention and mental health treatment in the child's environment.

SUBSTANCE ABUSE SERVICES

Accord DUI

A state-licensed program for individuals referred by the court, probation office or DMV who have been arrested and/or convicted of driving under the influence of alcohol or drugs. Accord assists participants in identifying and seeking solutions to their alcohol and drug issues.

COACHELLA VALLEY PROGRAMS

Desert Vista Program

Serves chronically homeless and disabled individuals through permanent supportive housing in scattered sites located in Palm Springs, Cathedral City and Desert Hot Springs. Services include assistance with health care, income, veteran benefit, as well as extensive case management and substances abuse counseling.

The Mission Outreach Program

In collaboration with the First Baptist Church, serves homeless individuals in Desert Hot Springs on a walk-in basis with mail and telephone service, hygiene products, sack lunches and referrals to community social services.

Family Resource Center

Assists homeless families and individuals with emergency needs such as food, bus vouchers and rental assistance in Desert Hot Springs.

